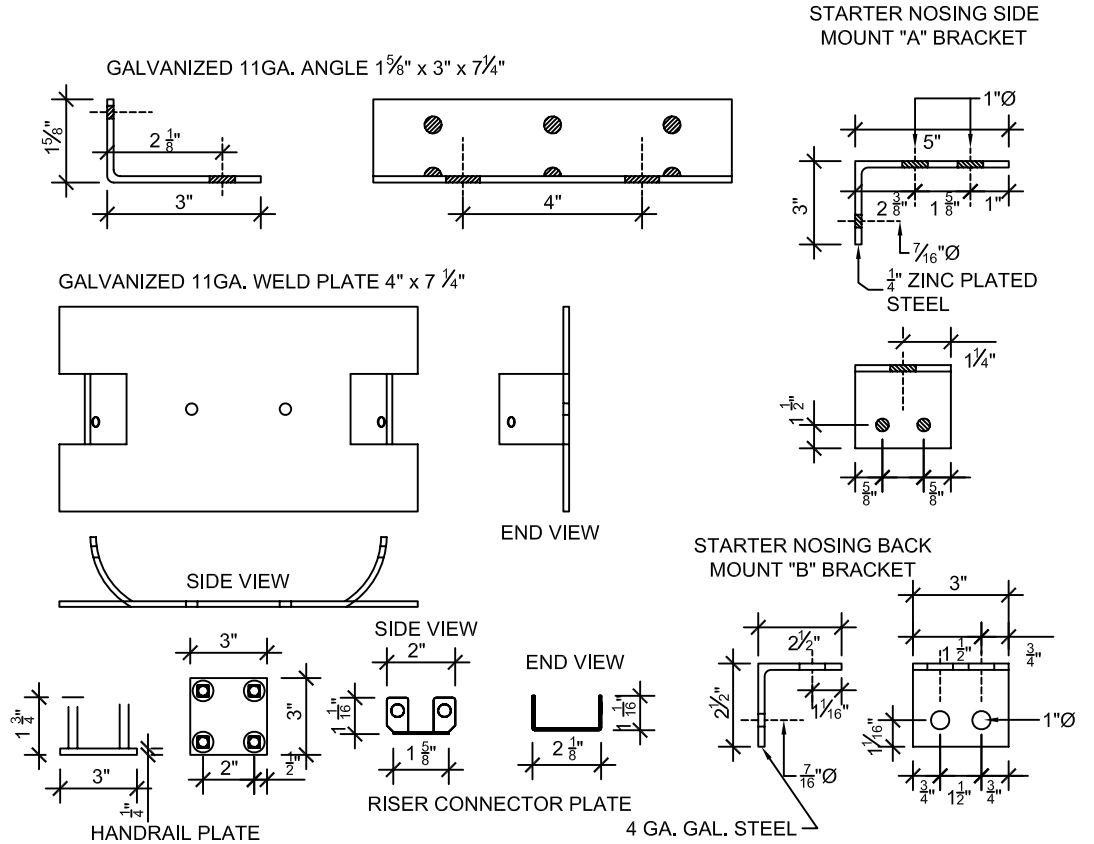


FILE: STP-0.1-04b
 REV: 08.30.12



1. THIS SHEET IS INTENDED TO BE THE STANDARD PLAN ONLY FOR "STEPSTONE" PRECAST CONCRETE TREAD AND RISER SYSTEM. THE PURPOSE OF THIS STANDARD PLAN IS TO SHOW ONLY THE TREADS AND RISERS AND THEIR DIRECT CONNECTIONS TO THE SUPPORTING STRUCTURE.
2. THIS STANDARD PLAN DOES NOT COVER THE DESIGN OR INSTALLATION OF ANY SUPPORTING STRUCTURE, HANDRAILS OR GUARDRAILS. IT DOES NOT COVER ACCESS REQUIREMENTS.
3. ONLY ITEMS NOTED BY "STEPSTONE" SHALL BE FURNISHED BY "STEPSTONE". SUCH ITEMS SHALL BE INSTALLED BY OTHERS. "STEPSTONE" SHALL NOT BE RESPONSIBLE FOR THE QUALITY OF THE INSTALLATION.
4. ALL ITEMS NOTED AS "NOT BY STEPSTONE" SHALL BE FURNISHED AND INSTALLED BY OTHERS. "STEPSTONE" SHALL NOT BE RESPONSIBLE FOR THE DESIGN AND INSTALLATION OF SUCH ITEMS.
5. ALL WELDS NOTED AS "NOT BY STEPSTONE" ARE THE MINIMUM SIZE AND LENGTH REQUIRED BY "STEPSTONE" AND SHALL BE MADE BY OTHERS. "STEPSTONE" SHALL NOT BE RESPONSIBLE FOR THE INSPECTION OR QUALITY OF SUCH WELDS.
6. ALL ITEMS HAVE STANDARD MANUFACTURING TOLERANCES.
7. ALLOW 1/8" - 3/16" CLEARANCE BETWEEN TREADS & STRINGERS ON EACH SIDE.
8. ALL CONCRETE SHALL BE 5,000 P.S.I. (TYPICAL)
9. MAXIMUM TREAD FREE SPAN IS 60". MAXIMUM LANDING PLANK FREE SPAN IS 60".

* CUSTOM LENGTHS ARE AVAILABLE.

<h1>GENERAL DETAILS</h1>	SCALE: N.T.S.	
	FILE: STP-0.1-04b	